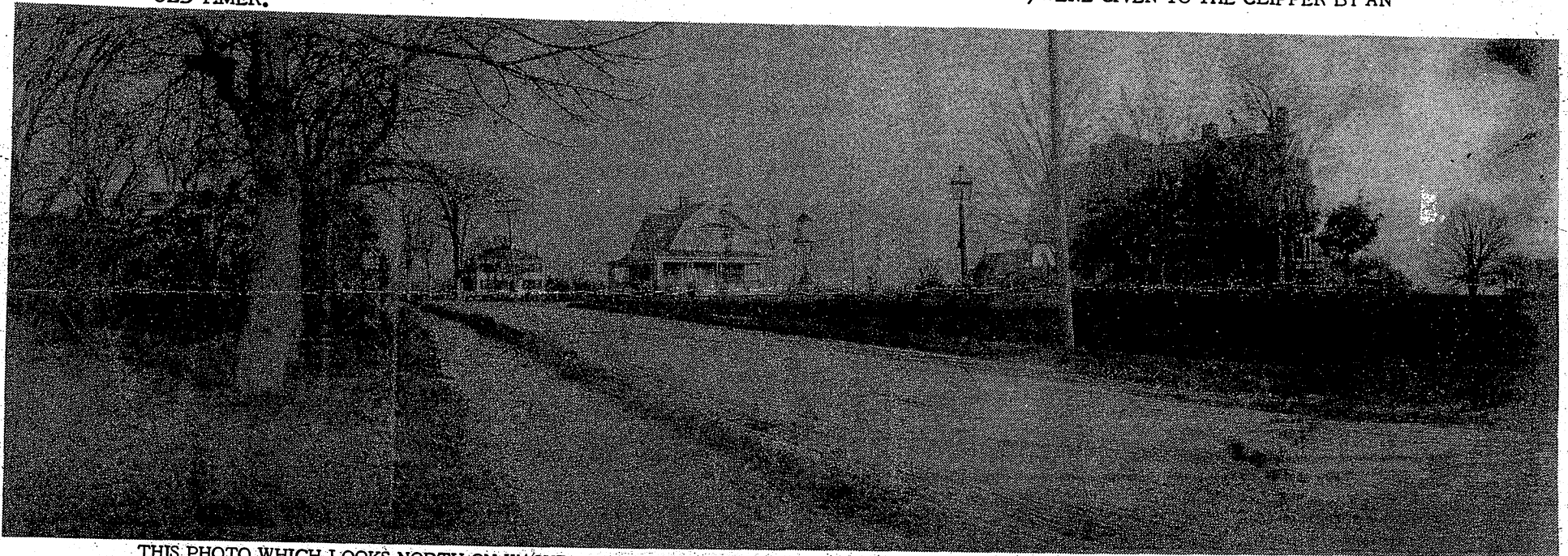


THIS VIEW OF WASHINGTON ST. LOOKING SOUTH SHOWS THE JAMES FRAME HOUSE ON THE LEFT WITH THE OLIVER BARKER HOUSE JUST BEYOND. ON THE RIGHT IS THE HOME OF DR. AND MRS. GEORGE STARR THE ERIC PAPE HOUSE IS JUST BEYOND. PHOTOS WHICH WERE TAKEN IN THE 1890'S BY LAWRENCE SOULE (his son Parker Soule lived on Powder Point) WERE GIVEN TO THE CLIPPER BY AN OLD TIMER.



THIS PHOTO WHICH LOOKS NORTH ON WASHINGTON ST. HAS THE WINSOR HOUSE ON THE LEFT AND ON THE FAR RIGHT IS A HOUSE BELONGING TO THE CLAPP LAB. THEY ALSO OWN THE NEXT HOUSE. THE HOUSE NEXT WAS REMOVED LONG AGO AND A NEW ONE RECENTLY BUILT THERE BY THE FREEMAN ROYNTONS. THE WILLIAM LAWRENCE HOUSE WAS THE FIRST HOUSE BUILT THERE.